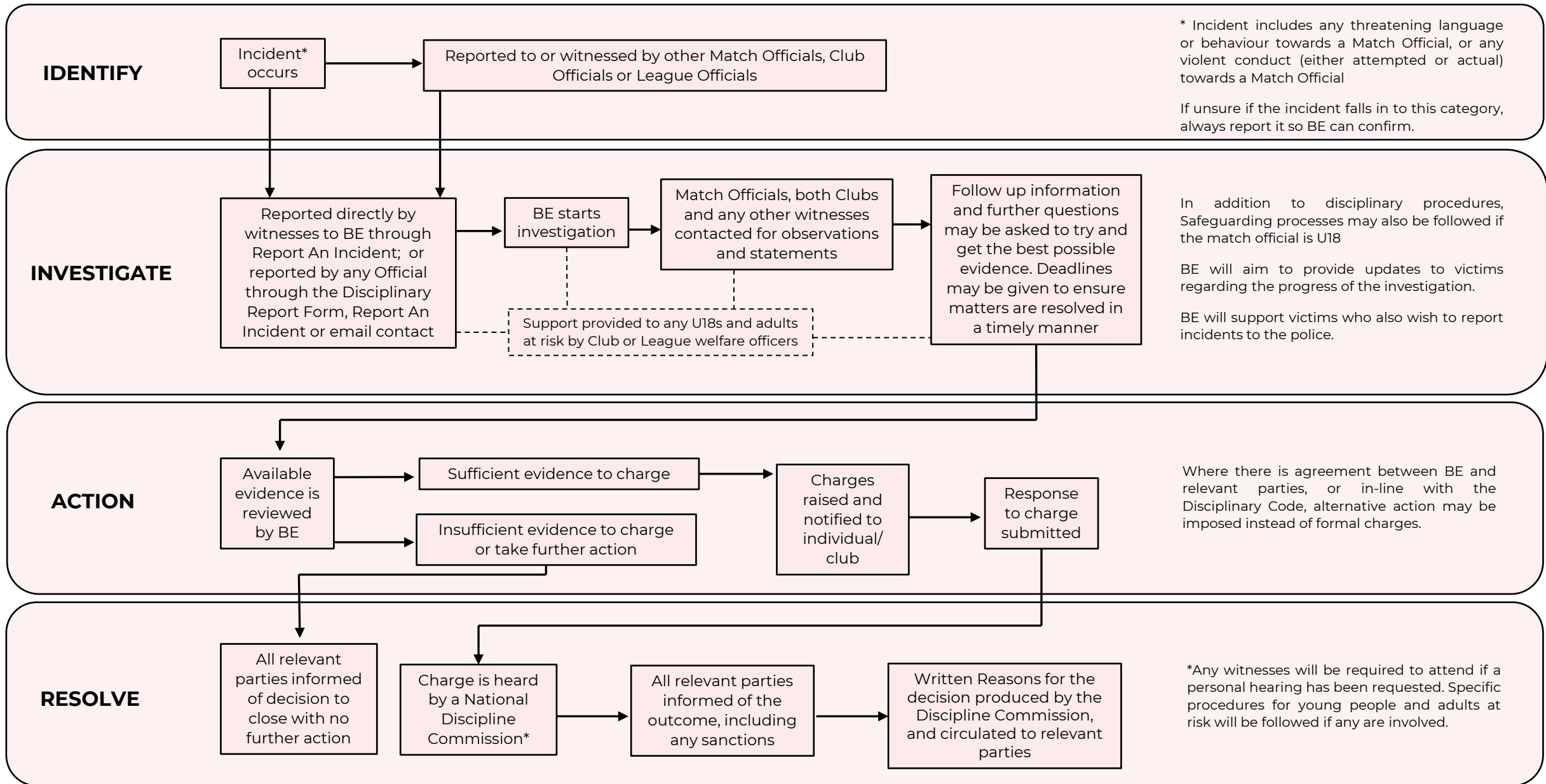


SERIOUS INCIDENTS AGAINST MATCH OFFICIALS - PROCESS OVERVIEW



* Incident includes any threatening language or behaviour towards a Match Official, or any violent conduct (either attempted or actual) towards a Match Official

If unsure if the incident falls in to this category, always report it so BE can confirm.

In addition to disciplinary procedures, Safeguarding processes may also be followed if the match official is U18

BE will aim to provide updates to victims regarding the progress of the investigation.

BE will support victims who also wish to report incidents to the police.

Where there is agreement between BE and relevant parties, or in-line with the Disciplinary Code, alternative action may be imposed instead of formal charges.

*Any witnesses will be required to attend if a personal hearing has been requested. Specific procedures for young people and adults at risk will be followed if any are involved.